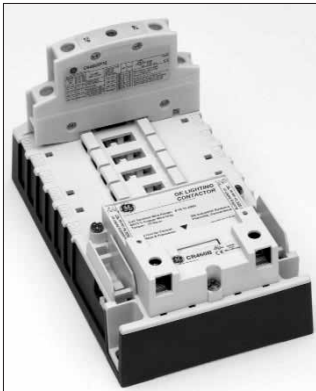


CR460 Series Lighting Contactors

The ultimate in versatility, simplicity and performance

Quick Selector

1. Choose Basic Contactor.



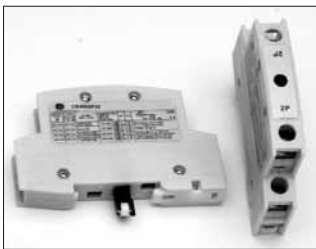
Combined with other appropriate components, basic contactors allow configuration into any available electrically or mechanically held model. Includes power poles.

Description	Cat. No.
Base with 1NO-1NC	CR463L11A*A
Base with 2NO	CR463L20A*A

	Coil Voltage		Coil Digit
	AC, 60 Hz	AC, 50 Hz	
Suitable for electrically or mechanically held contactors	24V	20V	C
	28V	24V	D
	115-120V	110V	J
	200-208V	—	L
	230-240V	220V	S
Suitable for electrically held contactors. CPT required if used with mechanically held contactors	277V	240V	N
	347V	—	T
	460-480V	440V	U
	575-600V	550V	Y

Coil Voltage – Replace * in base catalog number with appropriate coil digit from the table below.

2. Select Power Poles.



CR460 Series basic contactors accept up to 6 single- or double-pole power poles.

These can be used to form up to:

- 12 NO poles when 6 double-poles are used in the NO positions (1-6) or
- 8 NC poles with 4 double-poles in the NC positions (1-4) + 4 NO poles with 2 double-poles in the 2 NO positions (5-6)

Power Poles	Cat. No. ,
Single Pole	CR460XP31
Double Pole	CR460XP32

Packaged individually and overpacked in multiple of 5.

3. Select Conversion Kit

(for Mechanically Held Contactors Only).



Kits for converting electrically held contactors to a mechanically held version. Kits includes control module, latch, latch cover and auxiliary contacts plus installation instructions. Conversion kits are suitable for coil voltages 277V and below. Use CPT to reduce coil voltage if line voltage is higher than 277V (see Fuse and Transformer Kits table).

Coil Volts	Control	Control Volts	Cat. No.
24-277	2-wire	24 Vac	CR460XMB
		110-120 Vac	CR460XMC
		200-277 Vac	CR460XMD
		Vac 12-24 Vdc	CR460XME
	3-wire	24 Vac	CR460XMM
		110-120 Vac	CR460XMN
		200-277 Vac	CR460XMP
		12-24 Vdc	CR460XMR



www.ge-ed.ca
www.geindustrial.com
1-800-GE-1STOP

CR460 Series Lighting Contactors

The ultimate in versatility, simplicity and performance

Quick Selector Continued...

4. Do You Need Auxiliary Contacts?



Each contactor may use one single or one double auxiliary contact block on each side of the base. When installed on the left side the contacts are NO, when installed on the right side the contacts are NC. This allows a total of 2NO + 2NC contacts maximum.

Auxiliary Block	Cat. No.
Single Pole	CR460XB1
Double Pole	CR460XB2

5. Do You Need an Enclosure?

Enclosure Type	With no CPT or pilot device	With provision for CPT and/or pilot device
	Cat. No.	Cat. No.
1	CR460XE1B	CR460XE1D
Type 1, Flush Mount	CR460XE8B	—
12/3R	CR460XE2B	CR460XE2D0
4	—	CR460XE4D

6. Do You Need Pilot Devices or Pilot Lights?

Enclosure accessory kits contain accessory and complete installation wiring and hardware. Some kits contain multiple nameplates for alternate markings.

Pilot Devices

Pilot Device	Application				Cat. No.
	Electrically Held		Mechanically Held		
	Without Interlock Aux.	With Interlock Aux.	2-wire Control Module	3-wire Control Module	
ON/OFF Push Button (Momentary)		X		X	CR460XP1
ON/OFF or OFF/AUTO Selector Switch (Maintained)	X		X	X	CR460XP2
ON/OFF Selector Switch, Spring Return to Center		X		X	CR460XP3
H-O-A or ON/OFF/AUTO Selector Switch	X		X		CR460XP4
H-O-A or ON/OFF/AUTO Keyed Selector Switch (Removal All Positions)			X		CR460XP5

Pilot Lights

Pilot light kits come with interchangeable red and green lenses. Pilot lights may require auxiliary contacts.

Type	Nameplate	Cat. No.
Standard	ON or OFF	CR460XLB*
Push-to-Test	ON or OFF	CR460XLD*

Pilot Light Voltage

Replace * in pilot light catalog number with appropriate voltage digit from the table below.

Voltage	Digit
24 Vac/dc	C
120 Vac	J
208 Vac	L
240 Vac	S
277 Vac	N
347 Vac	T
480 Vac	U
600 Vac	Y



www.ge-ed.ca
www.geindustrial.com
1-800-GE-1STOP

CR460 Series Lighting Contactors

The ultimate in versatility, simplicity and performance

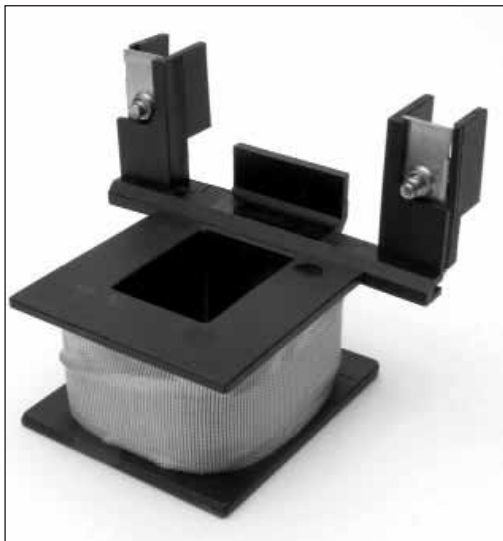
Quick Selector Continued...

7. Do You Need Fuses or CPTs?

Combined with other appropriate components, basic contactors allow configuration into any available electrically or mechanically held model. Includes power poles.

Contactor Type	Kit		Cat. No.
Without CPT	Control Circuit Fuses Kit		CR460XF
With 100VA CPT (includes 2 primary and 1 secondary fuse)	CPT Primary Volts (60Hz)	CPT Secondary Volts	
	208	120V	CR460XTB
	220-240		CR460XTC
	277		CR460XTD
	440-480		CR460XTE
	600		CR460XTF
	120	24V	CR460XTL
	208		CR460XTM
	220-240		ACR460XTN
	277		CR460XTP
	440-480		CR460XTR
	600		CR460XTS

8. Order Spare Coils if required.



Coil Voltage		Cat. No.
AC, 60 Hz	AC, 50 Hz	
24V	20V	CR460XCC
28V	24V	CR460XCD
115-120V	110V	CR460XCJ
200-208V	—	CR460XCL
230-240V	220V	CR460XCS
277V	240V	CR460XCN
347V	—	CR460XCT
460-480V	440V	CR460XCU
575-600V	500V	CR460XCY



www.ge-ed.ca
www.geindustrial.com
1-800-GE-1STOP

