

# GE Safety Switches

| CATALOGUE # | DESCRIPTION |
|-------------|-------------|
|-------------|-------------|

## 240/600V TH Series (most common)

Fusible Safety Switches, Heavy Duty (must add ground kit to all GE switches, see below)

|        |   |
|--------|---|
| TH4321 | 30A 3P 4W 240 max, Indoor Type 1 Fus. switch  |
| TH4322 | 60A 3P 4W 240 max, Indoor Type 1 Fus. switch  |
| TH4323 | 100A 3P 4W 240 max, Indoor Type 1 Fus. switch   |
| TH4324 | 200A 3P 4W 240 max, Indoor Type 1 Fus. switch   |
| TH4325 | 400A 3P 4W 240 max, Indoor Type 1 Fus. switch   |
| TH4326 | 600A 3P 4W 240 max, Indoor Type 1 Fus. switch, 600A needs THJ6 fuse adapter for J fuses |
| TH3361 | 30A 3P 3W 600V max., Indoor Type 1 Fus. switch  |
| TH3362 | 60A 3P 3W 600V max., Indoor Type 1 Fus. switch  |
| TH3363 | 100A 3P 3W 600V max., Indoor Type 1 Fus. switch   |
| TH3364 | 200A 3P 3W 600V max., Indoor Type 1 Fus. switch   |
| TH3365 | 400A 3P 3W 600V max., Indoor Type 1 Fus. switch   |
| TH3366 | 600A 3P 3W 600V max., Indoor Type 1 Fus. SW 600A needs THJ6 fuse adapter for J fuses    |

## 240/600V TH Series (most common)

Non-Fusible Safety Switches, Heavy Duty (must add ground kit to all GE switches, see below)

|         |  |
|---------|--|
| THN3363 | 100A 3P 600V max., Indoor Type 1 NF switch |
| THN3364 | 200A 3P 600V max., Indoor Type 1 NF switch |
| THN3365 | 400A 3P 600V max., Indoor Type 1 NF switch |
| THN3366 | 600A 3P 600V max., Indoor Type 1 NF switch |

Note: Must add neutral kit if 4wire required on 600v switches



imagination at work

[www.ge-ed.ca](http://www.ge-ed.ca)  
[www.geindustrial.com](http://www.geindustrial.com)  
1-800-GE-1STOP

# GE Safety Switches

| CATALOGUE # | DESCRIPTION |
|-------------|-------------|
|-------------|-------------|

## Misc. Accessories for Safety Switches

(must add ground kit to all GE switches, see below)

|          |   |
|----------|---|
| TGL1     | Ground kit 30-60A                                       |
| TGL3     | Ground kit 100-200A                                     |
| TGL6     | Ground kit 400-600A                                     |
| TNI62    | Neutral kit 30A 600v & 60A TH Non-Fusible               |
| TNIA62   | Neutral kit 60A Fusible 600v                            |
| TNIA63   | Neutral kit 100A Fusible 600v                           |
| TNI63    | Neutral kit 100A Non-Fusible TH 600v                    |
| TNIA64   | Neutral kit 200A Fusible 600v                           |
| TNI65    | Neutral kit 400A Fusible 600v                           |
| TNI66    | Neutral kit 600A Fusible 600v                           |
| TNI67    | Neutral kit 800A for TH Series Fusible Switch           |
| TNI68A   | Neutral kit 1200A for TH Series Fusible Switch          |
| THAUX21D | Aux. Contact kit for TH 30A 2P, 3P (req'd for elevator) |
| THAUX64D | Aux. Contact kit for TH 60-200A 2P, 3P                  |
| THAUX66D | Aux. Contact kit for TH 400-600A 2P, 3P                 |
| THJ6     | 600A class J fuse adapter kit req'd for 600A sw's       |

Note: Must add neutral kit if 4wire required on 600v switches



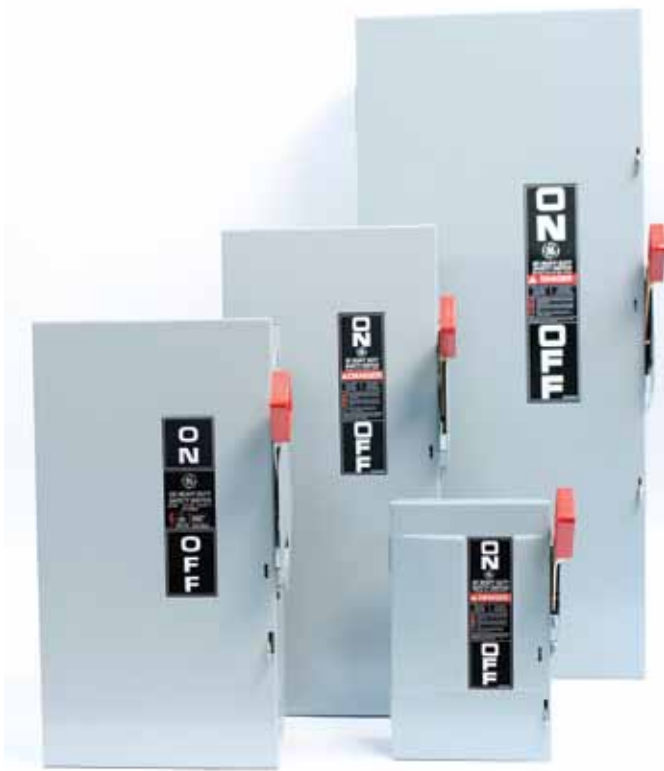
imagination at work

[www.ge-ed.ca](http://www.ge-ed.ca)  
[www.geindustrial.com](http://www.geindustrial.com)  
1-800-GE-1STOP

# GE Safety Switches

TH Series - Heavy Duty

TG Series - General Duty



30-1200 Amperes Rated

240v AC, 250v DC

600v AC, 600v DC

CSA Certified

Full cover interlocks

Quick make, quick break mechanism

60°C and 75°C conductor rating



imagination at work

[www.ge-ed.ca](http://www.ge-ed.ca)  
[www.geindustrial.com](http://www.geindustrial.com)  
1-800-GE-1STOP

# GE Safety Switches

## 240V TH Series (120/208V TH Series) (3ph 4wire)

Fusible

| Amperage | Enclosure Type |                                   | 3ph 4wire Product Number | Add-"R" for Nema 3R |
|----------|----------------|-----------------------------------|--------------------------|---------------------|
| 30       | 1              |                                   | TH4321                   | Add-"R" for Nema 3R |
| 60       | 1              |                                   | TH4322                   |                     |
| 100      | 1              |                                   | TH4323                   |                     |
| 200      | 1              |                                   | TH4324                   |                     |
| 400      | 1              |                                   | TH4325                   |                     |
| 600      | 1              | Add THJ6 fuse adapter for J fuses | TH4326+THJ6              |                     |
| 800      | 1              |                                   | TC72367 c/w TNI 67       |                     |
| 1200     | 1              |                                   | TC72368 c/w TNI 68A      |                     |

Note: For single phase 3wire, see BuyLog Catalog  
For Nema 4/4X up to 600 Amp, add SS to product number



TH4321 30A Safety Switch



TH4321 30A Safety Switch (open)



imagination at work

[www.ge-ed.ca](http://www.ge-ed.ca)  
[www.geindustrial.com](http://www.geindustrial.com)  
1-800-GE-1STOP

# GE Safety Switches

## 600V TH Series

Fusible

| Amperage | Enclosure Type | 3ph 3Wire Product Number | Add neutral kit below to be 4 Wire | Add-"R" for Nema 3R |
|----------|----------------|--------------------------|------------------------------------|---------------------|
| 30       | 1              | TH3361                   | TNI62                              | Add-"R" for Nema 3R |
| 60       | 1              | TH3362                   | TNIA62                             |                     |
| 100      | 1              | TH3363                   | TNIA63                             |                     |
| 200      | 1              | TH3364                   | TNIA64                             |                     |
| 400      | 1              | TH3365                   | TNI65                              |                     |
| 600      | 1              | TH3366 + THJ6            | TNI66                              |                     |
| 800      | 1              | TC72367                  | TNI67                              |                     |
| 1200     | 1              | TC72368                  | TNI68A                             |                     |

Note: For Fusible two pole, use the same product number  
 For Nema 4/4X up to 600 Amp, add SS to product number



TH4321 30A Safety Switch




TH4321 30A Safety Switch (open)

# GE Safety Disconnects

## 240/600V TH Series

Non-Fusible

| Amperage | Enclosure Type | 3ph 3Wire Product Number | Add-"R" for Nema 3R  |
|----------|----------------|--------------------------|--|
| 30       | 1              | THN3361                  | Add-"R" for Nema 3R  |
| 60       | 1              | THN3362                  |  |
| 100      | 1              | THN3363                  |  |
| 200      | 1              | THN3364                  |  |
| 400      | 1              | THN3365                  |  |
| 600      | 1              | THN3366                  |  |
| 800      | 1              | TC36367                  |  |
| 1200     | 1              | TC36368                  |  |

Note: For Nema 4/4X up to 600 Amp, add SS to product number  
800 & 1200 Amp not available in Nema 3R



[www.ge-ed.ca](http://www.ge-ed.ca)  
[www.geindustrial.com](http://www.geindustrial.com)  
1-800-GE-1STOP

# Safety Switches - Enclosure Dimensions

Spec-Setter™ Safety Switches - TG and TH, NEMA Type 1 and 3R Enclosures

## NEMA Type 1 TG Approximate Dimensions in Inches Figure 1

Product Number Dimension W Dimension H Dimension D Dimension W2 KO Figure Number1

| Product # | Dimension W | Dimension H | Dimension D | Dimension W2 | KO Fig. # |
|-----------|-------------|-------------|-------------|--------------|-----------|
| TG3221    | 6 1/2       | 10 5/8      | 3 5/16      | 7            | 1         |
| TG3222    | 8 1/2       | 13 7/8      | 4           | 9            | 15        |
| TG3223    | 9 1/2       | 21 3/8      | 5           | 10           | 3         |
| TG3224    | 13 3/4      | 29 1/4      | 5 1/2       | 14           | 4         |
| TG3225    | 22          | 49 1/2      | 9           | 23           | 5         |
| TG3226    | 23 1/4      | 50          | 9 1/4       | 23 3/4       | 6         |
| TG3325    | 22          | 49 1/2      | 9           | 23           | 7         |
| TG3326    | 23 1/4      | 50          | 9 1/4       | 23 3/4       | 6         |
| TG4321    | 6 1/2       | 10 5/8      | 3 5/16      | 7            | 1         |
| TG4322    | 8 1/2       | 13 7/8      | 4           | 9            | 15        |
| TG4323    | 9 1/2       | 21 3/8      | 5           | 10           | 3         |
| TG4324    | 13 3/4      | 29 1/4      | 5 1/2       | 14           | 4         |
| TG4325    | 22          | 49 1/2      | 9           | 23           | 7         |
| TG4326    | 23 1/4      | 50          | 9 1/4       | 23 3/4       | 6         |
| TGN3321   | 6 1/2       | 10 5/8      | 3 5/16      | 7            | 1         |
| TGN3322   | 8 1/2       | 13 7/8      | 4           | 9            | 15        |
| TGN3323   | 9 1/2       | 21 3/8      | 5           | 10           | 3         |
| TGN3324   | 13 3/4      | 29 1/4      | 5 1/2       | 14           | 4         |
| TGN3325   | 22          | 49 1/2      | 9           | 23           | 7         |
| TGN3326   | 23 1/4      | 50          | 9 1/4       | 23 3/4       | 6         |

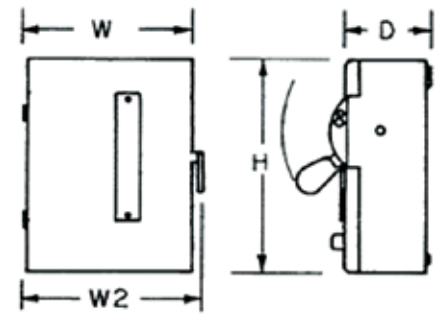


Figure 1

# Safety Switches - Enclosure Dimensions

Spec-Setter™ Safety Switches - TG and TH, NEMA Type 1 and 3R Enclosures

## NEMA Type 1 TH Approximate Dimensions in Inches Figure 2

Product Number Dimension W Dimension H Dimension D Dimension W2 KO Fig. #

| Product # | Dimension W | Dimension H | Dimension D | Dimension W2 | KO Fig. # |
|-----------|-------------|-------------|-------------|--------------|-----------|
| TH3221    | 6 1/2       | 10 3/8      | 3 3/8       | 7 1/8        | 1         |
| TH3222    | 9 1/2       | 17 5/8      | 5           | 10 1/8       | 3         |
| TH3223    | 9 3/8       | 19 3/8      | 5 1/16      | 10 1/4       | 3         |
| TH3224    | 13 1/2      | 25 3/8      | 5 1/16      | 14 1/4       | 4         |
| TH3225    | 23 1/5      | 50 7/8      | 8 3/8       | 15 1/4       | 6         |
| TH3226    | 24 5/8      | 59 9/16     | 8 3/8       | 25 3/4       | 6         |
| TH3325    | 23 1/4      | 50 7/8      | 8 3/8       | 24 1/4       | 6         |
| TH3326    | 23 1/4      | 50 7/8      | 8 3/8       | 24 1/4       | 6         |
| TH4321    | 6 1/2       | 10 3/8      | 3 3/8       | 7 1/8        | 1         |
| TH4322    | 9 1/2       | 17 5/8      | 5           | 10 1/8       | 3         |
| TH4323    | 9 1/2       | 21 3/8      | 5           | 10 1/8       | 3         |
| TH4324    | 13 5/8      | 31 5/8      | 5 1/4       | 14 1/2       | 4         |
| TH4325    | 23 1/4      | 50 7/8      | 8 3/8       | 24 1/4       | 6         |
| TH4326    | 23 1/4      | 50 7/8      | 8 3/8       | 24 1/4       | 6         |
| TH2261DC  | 8 5/8       | 12 5/8      | 4           | 9 1/2        | 15        |
| TH2262DC  | 9 1/2       | 21 3/8      | 5           | 10 1/8       | 3         |
| TH2263DC  | 9 1/2       | 22 3/4      | 5           | 10 1/8       | 14        |
| TH3361    | 8 5/8       | 12 5/8      | 4           | 9 1/2        | 15        |
| TH3362    | 9 1/2       | 21 3/8      | 5           | 10 1/8       | 3         |
| TH3363    | 9 1/2       | 22 3/4      | 5           | 10 1/8       | 14        |
| TH3364    | 13 5/8      | 31 5/8      | 5 1/4       | 14 1/2       | 4         |
| TH3365    | 23 1/4      | 54          | 8 3/8       | 24 1/2       | 6         |
| TH3366    | 23 1/4      | 54          | 8 3/8       | 24 1/2       | 6         |
| THN2261DC | 8 1/2       | 10 9/16     | 4           | 9 1/4        | 15        |
| THN2262DC | 9 1/2       | 17 5/8      | 5           | 10 1/8       | 3         |
| THN2263DC | 9 1/2       | 17 5/8      | 5           | 10 1/8       | 3         |
| THN3321   | 6 1/2       | 10 3/8      | 3 3/8       | 7 1/8        | 1         |
| THN3361   | 8 1/2       | 10 9/16     | 4           | 9 1/4        | 15        |
| THN3362   | 9 1/2       | 17 5/8      | 5           | 10 1/8       | 3         |
| THN3363   | 9 1/2       | 17 5/8      | 5           | 10 1/8       | 3         |
| THN3364   | 13 5/8      | 31 5/8      | 5 1/4       | 14 1/2       | 4         |
| THN3365   | 23 1/4      | 42 1/2      | 8 3/8       | 24 1/2       | 6         |
| THN3366   | 23 1/4      | 42 1/2      | 8 3/8       | 24 1/2       | 6         |

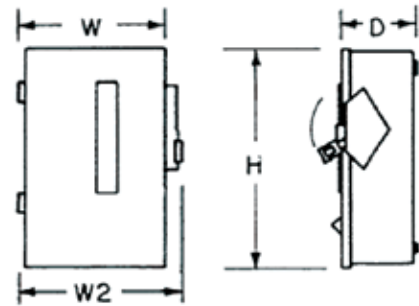


Figure 2



imagination at work

www.ge-ed.ca  
www.geindustrial.com  
1-800-GE-1STOP



imagination at work

[www.ge-ed.ca](http://www.ge-ed.ca)  
[www.geindustrial.com](http://www.geindustrial.com)  
1-800-GE-1STOP

# Safety Switches - Enclosure Dimensions

Spec-Setter™ Safety Switches - TG and TH, NEMA Type 1 and 3R Enclosures

## NEMA Type 3R TH Approximate Dimensions in Inches Figure 4

Product Number Dimension W Dimension H Dimension D Dimension W2 KO Figure Number1

| Product #  | Dimension W | Dimension H | Dimension D | Dimension W2 | KO Fig. # |
|------------|-------------|-------------|-------------|--------------|-----------|
| TH3221R    | 6 7/8       | 10 5/8      | 3 5/16      | 7 1/8        | 8         |
| TH3222R    | 9 3/8       | 19 3/8      | 5 1/16      | 10 1/4       | 10        |
| TH3223R    | 13 1/2      | 25 3/8      | 5 1/16      | 14 1/4       | 10        |
| TH3224R    | 14 1/2      | 35 1/8      | 5 5/16      | 15 1/4       | 11        |
| TH3225R    | 24 5/8      | 59 9/16     | 8 3/8       | 25 3/4       | 18        |
| TH3226R    | 23 1/2      | 53 1/4      | 8 3/8       | 24 1/4       | 18        |
| TH3325R    | 23 1/2      | 49 1/8      | 8 3/8       | 24 1/4       | 18        |
| TH3326R    | 23 1/2      | 53 1/4      | 8 3/8       | 24 1/4       | 18        |
| TH4321R    | 6 7/8       | 10 5/8      | 3 5/16      | 7 1/8        | 8         |
| TH4322R    | 9 7/8       | 17 1/2      | 5           | 10 1/8       | 10        |
| TH4323R    | 9 7/8       | 22 1/4      | 5           | 10 5/8       | 10        |
| TH4324R    | 14          | 31 1/2      | 5 5/16      | 14 1/8       | 11        |
| TH2261RDC  | 8 7/8       | 13 1/4      | 4           | 9 1/2        | 19        |
| TH2262RDC  | 9 7/8       | 22 1/4      | 5           | 10 5/8       | 10        |
| TH2263RDC  | 9 7/8       | 22 1/4      | 5           | 10 5/8       | 10        |
| TH3361R    | 8 7/8       | 13 1/4      | 4           | 9 1/2        | 19        |
| TH3361RF   | 10 2/5      | 15          | 4 1/8       | 11 3/10      | -         |
| TH3361RF2  | 13 2/5      | 22 1/2      | 5 1/8       | 14 3/8       | -         |
| TH3362R    | 9 7/8       | 22 1/4      | 5           | 10 5/8       | 10        |
| TH3362RF   | 13 2/5      | 22 1/2      | 5 1/8       | 14 3/8       | -         |
| TH3363R    | 9 7/8       | 22 1/4      | 5           | 10 5/8       | 10        |
| TH3364R    | 14          | 31 1/2      | 5 5/16      | 14 1/8       | 11        |
| TH3365R    | 23 1/2      | 53 1/4      | 8 3/8       | 24 1/4       | 18        |
| TH3366R    | 23 1/2      | 53 1/4      | 8 3/8       | 24 1/4       | 18        |
| THN2261RDC | 8 7/8       | 13 1/4      | 4           | 9 1/2        | 19        |
| THN2262RDC | 9 7/8       | 17 1/2      | 5           | 10 1/8       | 10        |
| THN2263RDC | 9 7/8       | 17 1/2      | 5           | 10 1/8       | 10        |
| THN3361R   | 8 7/8       | 13 1/4      | 4           | 9 1/2        | 19        |
| THN3361RF  | 10 2/5      | 15          | 4 1/8       | 11 3/10      | -         |
| THN3362R   | 9 7/8       | 17 1/2      | 5           | 10 1/8       | 10        |
| THN3362RF  | 13 2/5      | 22 1/2      | 5 1/8       | 14 3/8       | -         |
| THN3363R   | 9 7/8       | 17 1/2      | 5           | 10 1/8       | 10        |
| THN3364R   | 14          | 31 1/2      | 5 5/16      | 14 1/8       | 11        |
| THN3365R   | 23 1/2      | 49 1/8      | 8 3/8       | 24 1/4       | 18        |
| THN3366R   | 23 1/2      | 53 1/4      | 8 3/8       | 24 1/4       | 18        |

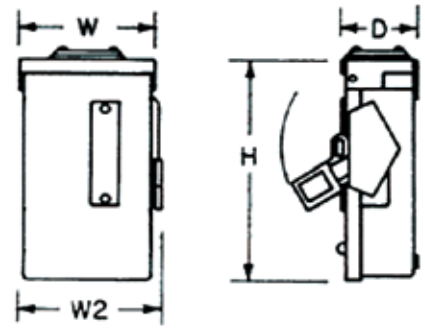


Figure 4

# Safety Switch Knockouts

Spec-Setter™ Safety Switches - TG and TH, NEMA Type 1 and 3R Enclosures

## Dimensions—Knockouts

| Symbol                | A    | B   | C   | D   | E     | F     | G   | H     | J     | K     | L     | M     | N     |
|-----------------------|------|-----|-----|-----|-------|-------|-----|-------|-------|-------|-------|-------|-------|
| Conduit Size (Inches) | 9/32 | 1/2 | 1/2 | 1/2 | 1/2   | 1/2   | 3/4 | 3/4   | 1     | 1     | 2     | 2     | 2 1/2 |
|                       | —    | —   | 3/4 | 3/4 | 3/4   | 3/4   | 1   | 1     | 1 1/4 | 1 1/2 | 2 1/2 | 2 1/2 | 3     |
|                       | —    | —   | —   | 1   | 1     | 1     | —   | 1 1/4 | 1 1/2 | 2     | 3     | 3     | —     |
|                       | —    | —   | —   | —   | 1 1/4 | 1 1/2 | —   | 1 1/2 | 2     | 2 1/2 | —     | 3 1/2 | —     |

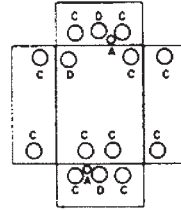


Figure 1

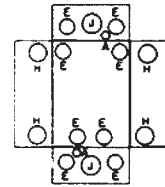


Figure 2

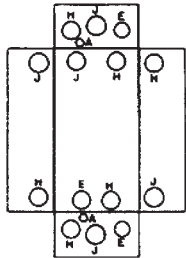


Figure 3

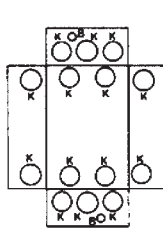


Figure 4

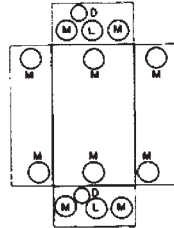


Figure 5

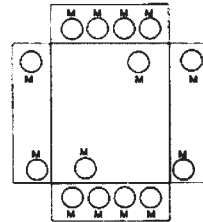


Figure 6

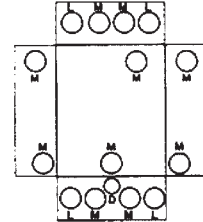


Figure 7

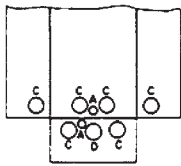


Figure 8

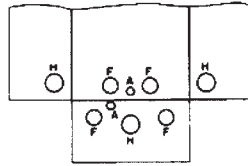


Figure 9

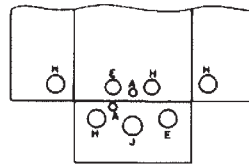


Figure 10

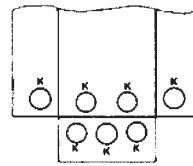


Figure 11

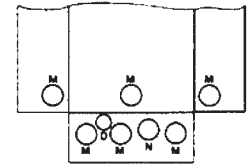


Figure 12



Figure 13

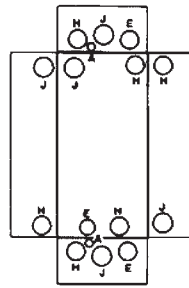


Figure 14

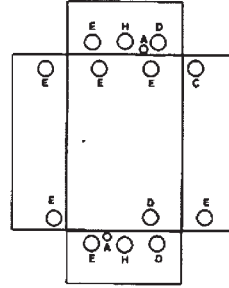


Figure 15

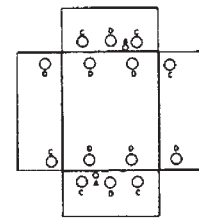


Figure 16

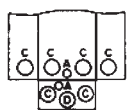


Figure 17

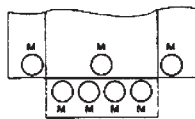


Figure 18

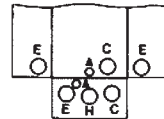


Figure 19



imagination at work

www.ge-ed.ca  
www.geindustrial.com  
1-800-GE-1STOP



imagination at work

[www.ge-ed.ca](http://www.ge-ed.ca)  
[www.geindustrial.com](http://www.geindustrial.com)  
1-800-GE-1STOP